



MULTI-DRIVE PRO

Made in Czech Republic
Powered by FMK



MULTI-DRIVE PRO

Introducing the new revolutionary garage door opener: MULTI-DRIVE PRO from FMK Motorized s.r.o. . Designed with versatility in mind, the MULTI-DRIVE PRO offers a range of installation options to fit virtually any garage. Its unique design allows for seamless integration with your home and ensures trouble-free operation from day one.

Upgrade to the FMK MULTI-DRIVE PRO today and experience the perfect combination of functionality, convenience and reliability that redefines what a garage door drive can be.



1000N / 1500N for residential garage doors



1500N / 1800N for commercial and light industrial doors

The MULTI-DRIVE PRO garage door opener, developed and manufactured in the Czech Republic by FMK Motorized s.r.o., is an example of innovation and excellence in engineering. This state-of-the-art garage and light industrial door operator reflects the craftsmanship and technical process that Czech manufacturers are known for offering a product that seamlessly combines reliability with advanced technology.

By maintaining a high level of development and manufacturing, FMK Motorized s.r.o. ensures strict quality control and supports a level of precision and durability that customers can trust. With MULTI-DRIVE PRO, homeowners around the world can appreciate top-notch design and functionality that stems from the rich industrial heritage of the Czech Republic.

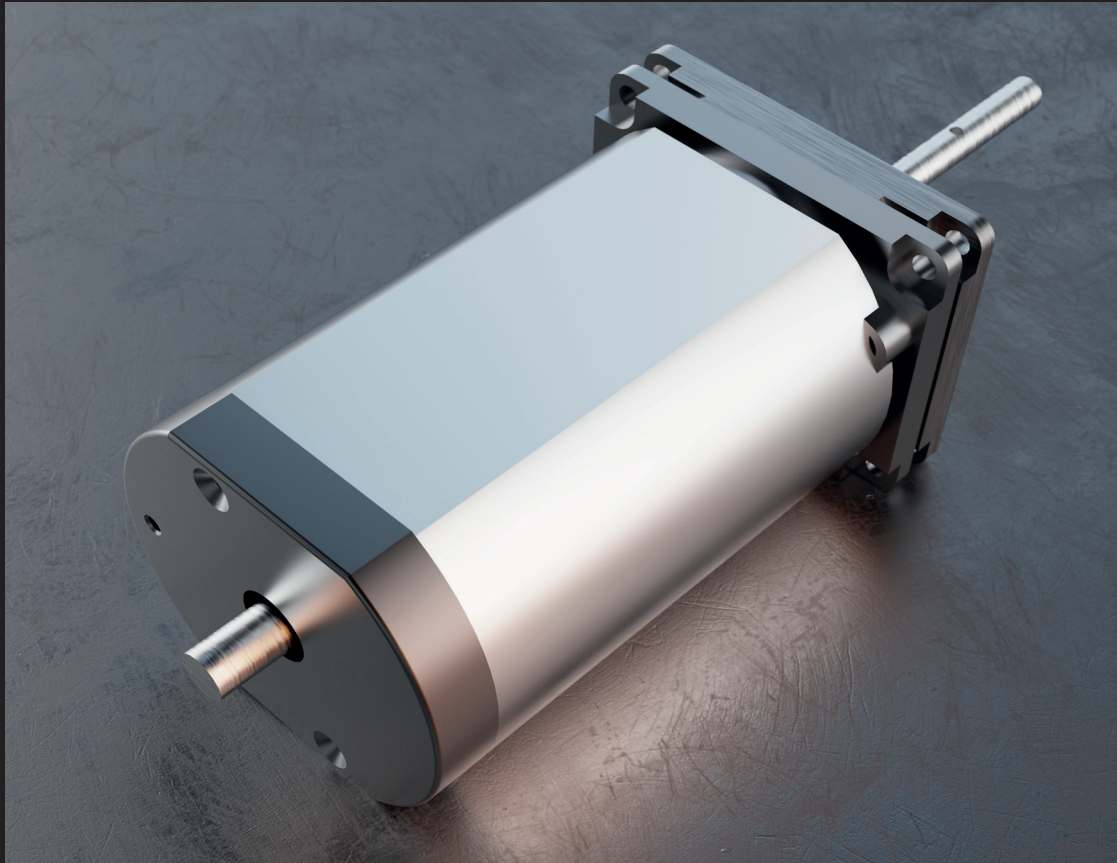
Materials



The FMK MULTI-DRIVE PRO can be equipped with an integrated battery backup, a thoughtful feature that ensures your garage door operator remains functional even in the event of a power outage. This built-in battery backup is a testament to the company's progressive approach to design, ensuring comfort and availability are maintained regardless of the circumstances.

Motor

The MULTI-DRIVE PRO is equipped with brushless direct current electric motors that ensure efficient, quiet and maintenance-free operation. All electric motors, transformers and gearboxes are subject to strict quality controls and meet equipment safety requirements.



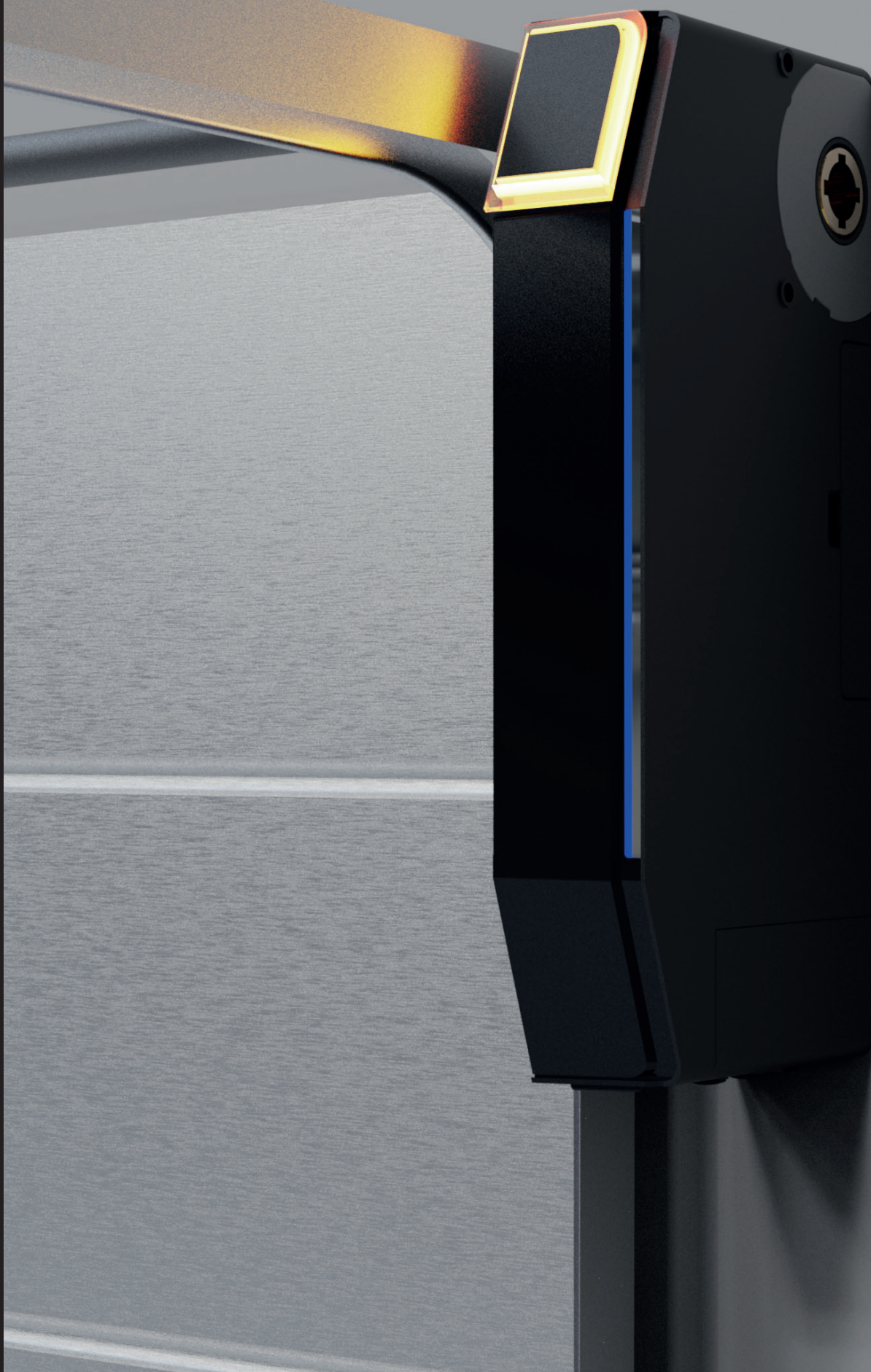
Saving enviroment

The FMK MULTI-DRIVE PRO achieves energy savings and reduced power consumption through several key features:

- DC brushless motors
- Efficient standby mode
- LED lighting
- Battery backup
- Regenerative drive systems
- Smart connection
- Precision engineering

The combination of these features makes the FMK MULTI-DRIVE PRO opener an energy-efficient choice as it uses less power in both active and standby mode compared to other openers that may use more traditional, less efficient technologies.

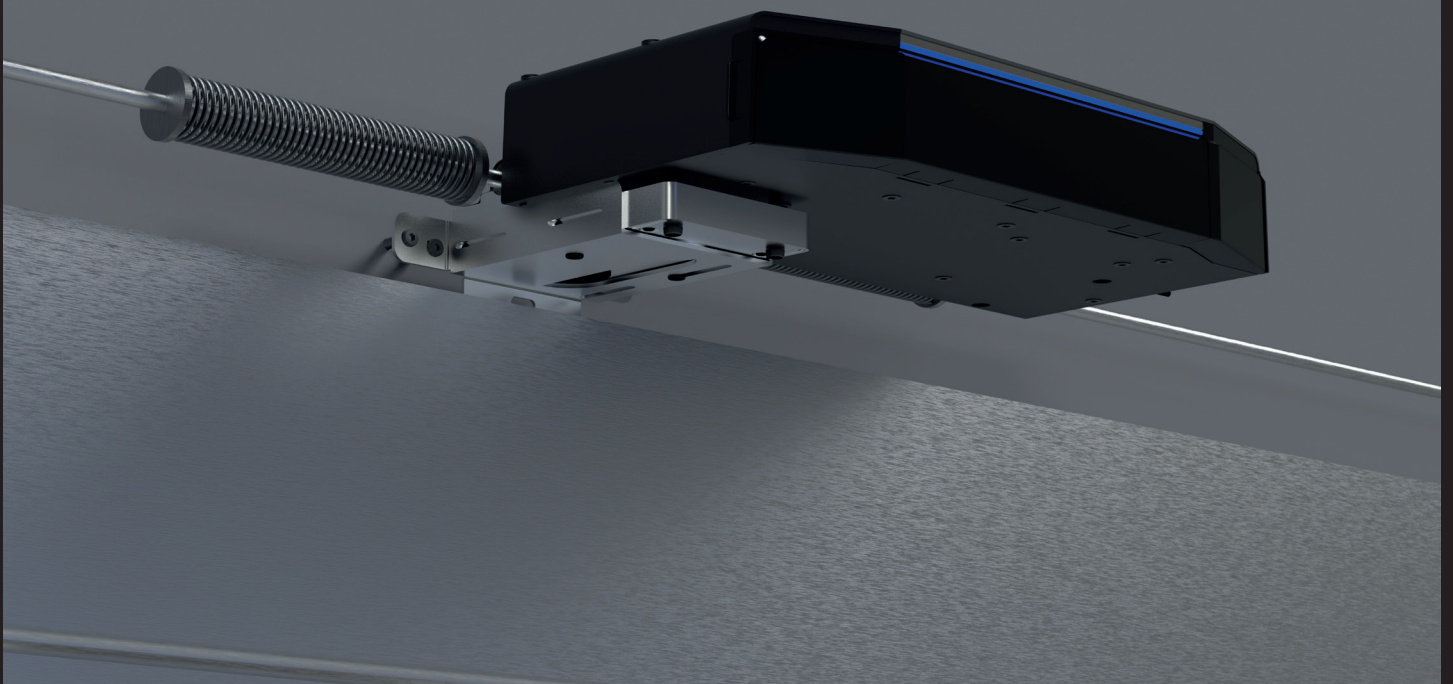
Side installation



Rail installation

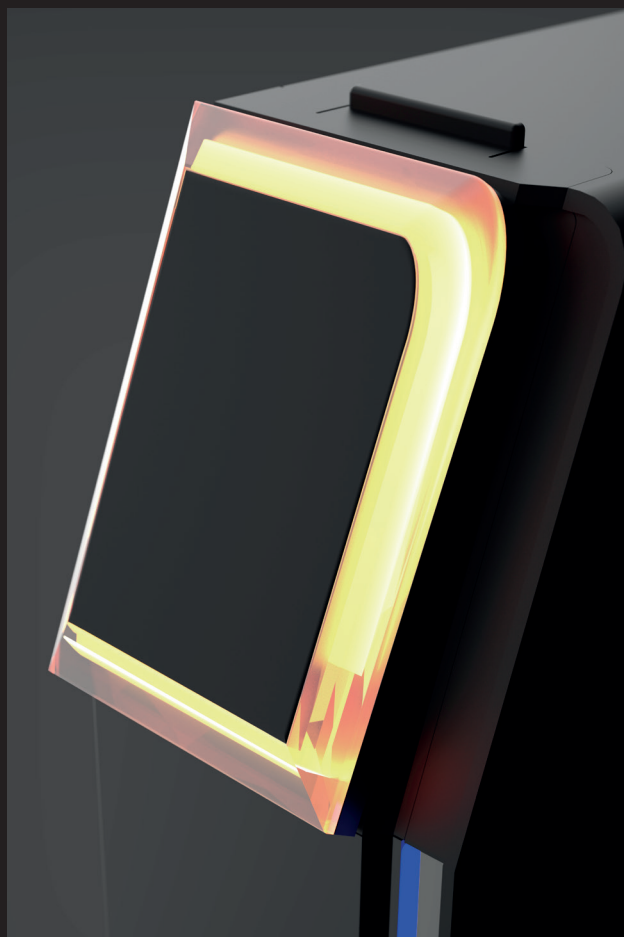


Mid-shaft installation (coming soon)



Warning light

Optional to install a flashing light as a safety device. It indicates when the door is moving.



LED light

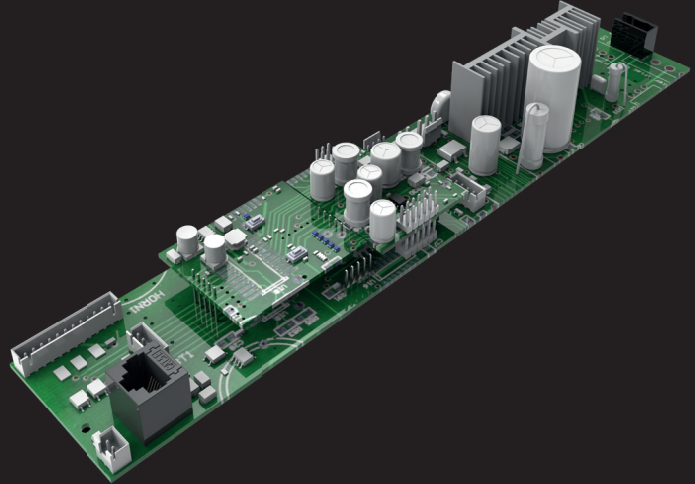
The MULTI-DRIVE PRO opener includes integrated lighting. LEDs are used because they consume less energy compared to conventional or halogen bulbs and have a longer life, reducing energy consumption and maintenance.



PCB

The FMK MULTI-DRIVE PRO PCBs are designed to offer a number of benefits, improving the overall functionality, durability and user-friendliness of the garage door opener system:

- Compact Design
- Built-in Microcontrols
- Durability
- Energy Efficiency
- Enhanced Safety Features
- Customizable Settings
- Smart Home Integration
- Upgradability
- Reliability



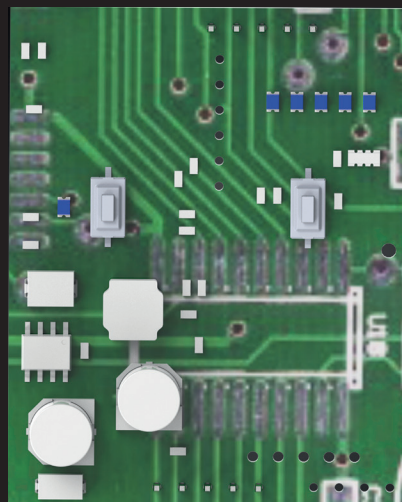
These advantages position the FMK MULTI-DRIVE PRO as a technologically advanced option suitable for modern households looking for hassle-free and efficient garage door control.

Wireless safety receiver

FMK MULTI-DRIVE PRO with wireless security and multi-frequency technology provides an excellent level of convenience and reliability for garage door opening systems.

Here are the benefits of these features:

- Interference Reduction
- Enhanced Security
- Improved Reach
- Wireless Security Sensors
- Obstacle Detection
- Battery Backup
- Regular self-checks
- False Trigger Reduction
- Convenient problem diagnosis

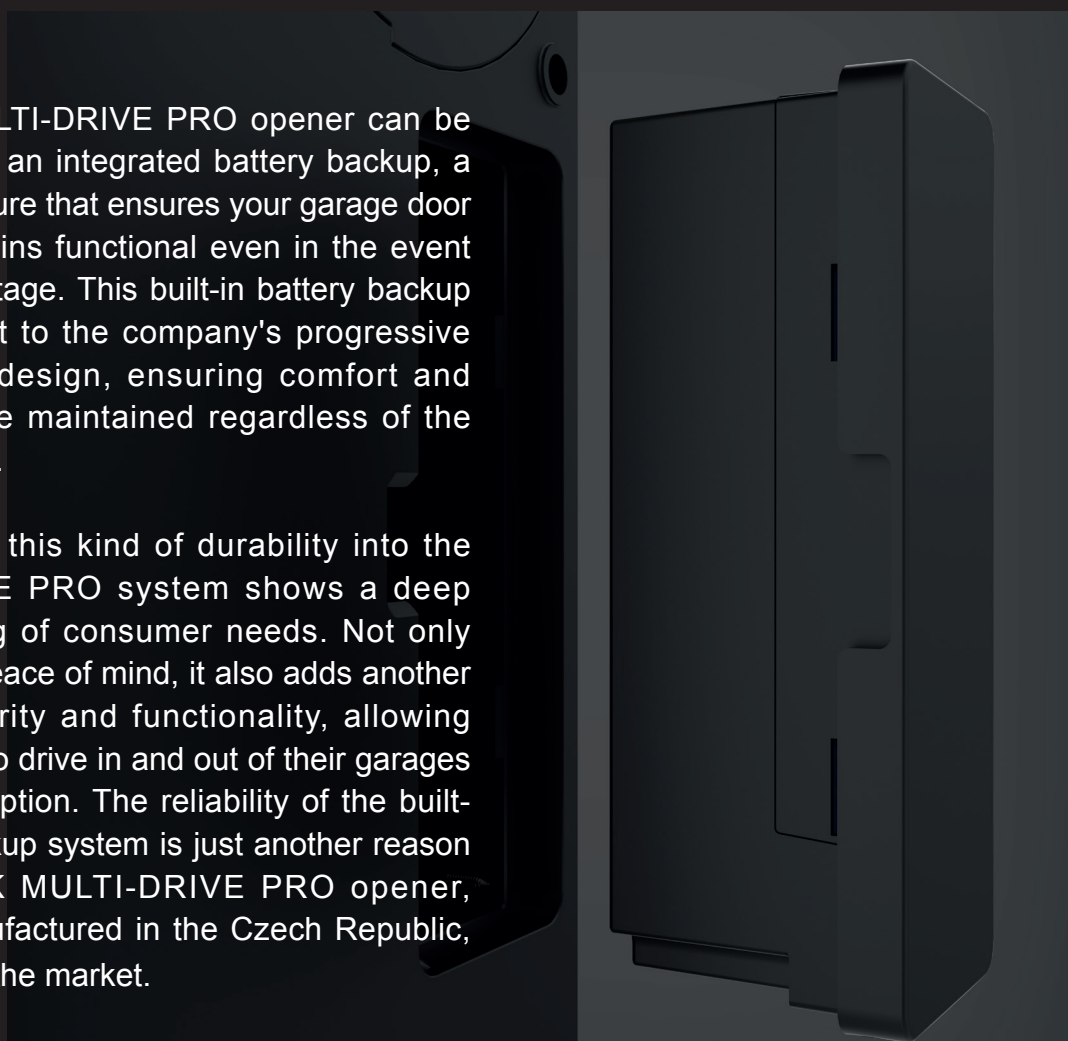


Overall, the combination of wireless security and multi-frequency technology in the FMK MULTI-DRIVE PRO ensures a highly secure, convenient and user-friendly garage door system operating experience.

Built-in lithium battery

The FMK MULTI-DRIVE PRO opener can be equipped with an integrated battery backup, a thoughtful feature that ensures your garage door operator remains functional even in the event of a power outage. This built-in battery backup is a testament to the company's progressive approach to design, ensuring comfort and availability are maintained regardless of the circumstances.

Incorporating this kind of durability into the MULTI-DRIVE PRO system shows a deep understanding of consumer needs. Not only does it offer peace of mind, it also adds another layer of security and functionality, allowing homeowners to drive in and out of their garages without interruption. The reliability of the built-in battery backup system is just another reason why the FMK MULTI-DRIVE PRO opener, carefully manufactured in the Czech Republic, stands out on the market.



The FMK MULTI-DRIVE PRO is equipped with a built-in backup battery that allows the garage door opener to function even in the event of a power outage. This feature ensures that you are not locked out of your garage if there is a power outage, as the system can switch to battery power to operate the gate.

While the FMK MULTI-DRIVE PRO itself does not directly use solar power, it is possible to integrate a solar system F-SUN into the gate control, which can provide charging for a backup battery if your solar system is capable of this. Here are the steps you might consider for this integration:

- Charge Controller
- Battery backup charging
- Power Management

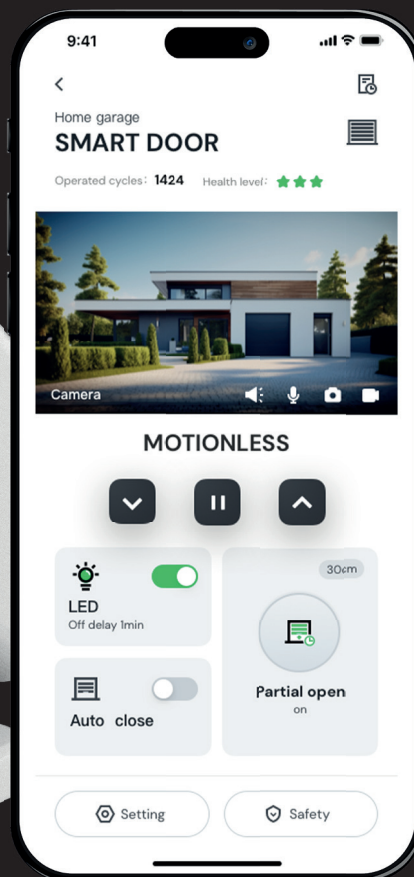
By integrating a solar energy system with battery storage with your FMK MULTI-DRIVE PRO garage door opener, you will not only ensure that your opener remains functional during power outages, but you will also help reduce your carbon footprint and potentially lower your energy bills. However, this setup requires proper installation and security measures to ensure proper functioning.

Camera module F-CAM

Yes, FMK MULTI-DRIVE PRO garage door openers can actually be equipped with additional features such as a camera that can be controlled using a special app such as F-LINX. Integrating a camera with your garage door opener adds a layer of security by allowing you to remotely monitor the garage area.

It could work like this:

Camera Integration
F-LINX App
Remote Access
Security
User Functions
Smart Home Integration



Using the F-LINX app to control the FMK MULTI-DRIVE PRO and integrated camera provides a comprehensive way to manage access to your garage, monitor security and give you peace of mind knowing you have remote visibility and control over that area of your home. Note that this feature will depend on a reliable home Wi-Fi network and ensuring the camera and F-LINX app are properly set up for secure remote access and control.

3 million
pixels

5-24 V
power supply supported

Storage
cloud storage
TF card storage compatible

6 fill
lights

2.4+5 G
dual frequency supported

120°
viewing angle

0.5 T
computing power

IP 66
degree of protection

360°
horizontal rotation

Programming module

The FMK MULTI-DRIVE PRO garage door operator programming module is designed for "easy setup", meaning it is user-friendly and intended for direct configuration of system settings.



The 'easy setup' module prioritizes user convenience without compromising the functionality or safety of the FMK MULTI-DRIVE PRO system, ensuring that programming and fine-tuning of garage door opener settings is accessible to a wide range of users.

Improved compatibility

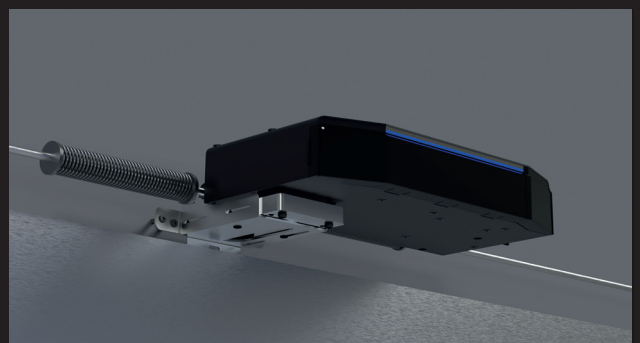
With multiple installation options, the MULTI-DRIVE PRO can be adapted to different garage types, door sizes and hardware types, making it a universally adaptable solution for installers and users.



The MULTI-DRIVE PRO opener can also be installed as a (classic) garage drive with a "C" rail with belt or chain.



It can be installed on the shaft of the garage door spring system either to the side and to the center of the shaft when using the transmission system (coming soon).



Electric lock E-LOCK

The E-LOCK wireless electric lock is another security feature for the FMK MULTI-DRIVE PRO garage door system. It functions as an electronic lock that increases the safety and security of your garage door by providing an additional layer of protection against forced entry.



The FMK MULTI-DRIVE PRO wireless electric lock that represents additional convenience for users driven by top security measures. Users can benefit from a safe, reliable and user-friendly way to ensure their garage door remains locked and secure as part of their home security ecosystem.

Features and benefits:

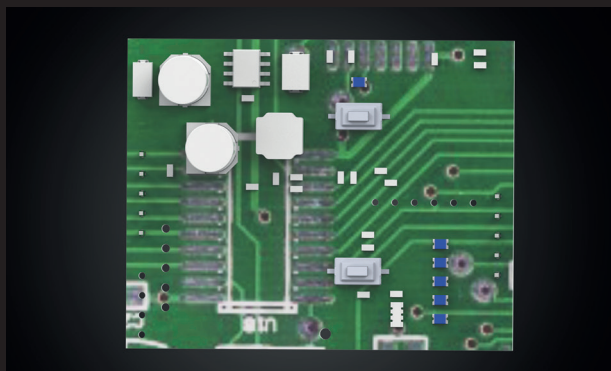
- Wireless Operation
- Automatic Locking
- Remote Control
- Safety Features
- Battery Operation
- Tamper Alert
- Easy to Program and Manage
- Durable Construction
- Compatibility



Wireless safety devices

Multi-frequency: An effective anti-interference technology.

**SMART
CONNECT**



Plug-in wifi module is included as standard on the engine



Wireless photocells F-PE



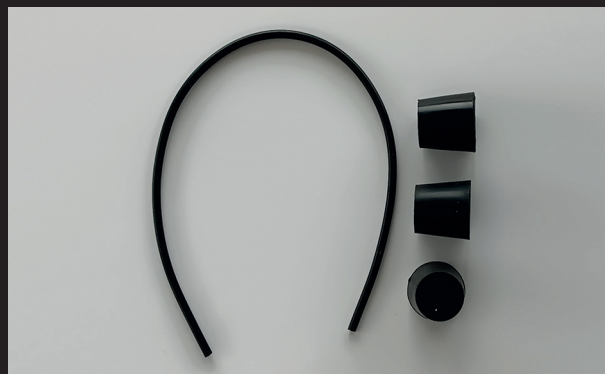
Box with transmitter for connecting safety elements SE-TX 02



2 boxes set with transmitter for connecting safety elements SE-TX 03



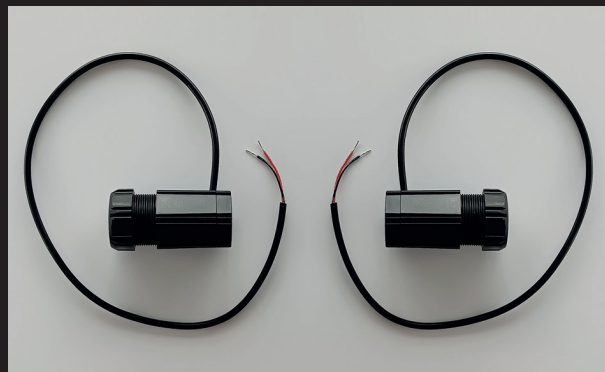
Wireless transmitter for pass door electric protection W-TX



AIR SWITCH SET



Optical edge sensors set with cable TX-6m or TX-10m OSE-6 or OSE-10

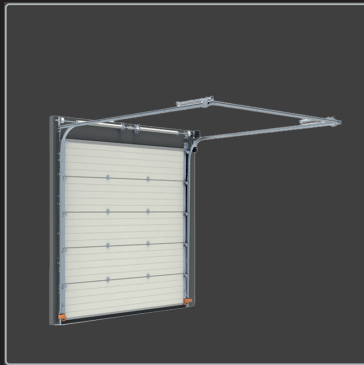


Slack rope switch, 2 pcs SRS

Technical information

	1000N	1500N	1800N
Max. output torque	25Nm	30Nm	35Nm
Rated output torque	21Nm	26Nm	31Nm
Output speed	24-40rpm	24-40rpm	24-40rpm
Output shaft/hollow shaft	φ25,4mm	φ25,4mm	φ25,4mm
Input voltage	220-240V	220-240V	220-240V
Static holding torque	200Nm	200Nm	200Nm
Motor power	280W	330W	380W
Control system	30V DC	30V DC	30V DC
Duty rating	20 cycles/H	20 cycles/H	20 cycles/H
Limit switch range	15 turns	15 turns	15 turns
Temperature range	-20°C~+60°C	-20°C~+60°C	-20°C~+60°C
Operating consumption	135W	140W	140W
Standby consumption	3,9W	4,0W	4,0W
Installation	Side installation, Rail installation, Mid-shaft installation (coming soon)		

Recommended door sizes



Standard Lift



High Lift



Vertical Lift

	1000N	1500N	1800N
Side installation			
Standard Lift	12m ²	15m ²	18m ²
High Lif	12m ²	15m ²	18m ²
Vertical Lift	10m ²	13m ²	16m ²

Ceiling Installation

	1000N	1500N	1800N
Standard	10m ²	12m ²	14m ²



KRUŽÍK s.r.o.

Kotojedy 110
767 01 Kroměříž
Czech Republic

Tel +420 601 122 014
+420 774 773 324

E-mail export2@kruzik.cz

www.kruzik.cz

www.kruzik.eu

